

## DEDICATED GIVING FORM

I hereby authorize Our Lady of the Assumption Parish, Port Coquitlam, BC, Canada to withdraw my monthly contribution as follows:

A total monthly contribution of:

\$ \_\_\_\_\_

Name(s): \_\_\_\_\_

Telephone #: \_\_\_\_\_

Email: \_\_\_\_\_

Address: \_\_\_\_\_  
\_\_\_\_\_

Postal Code: \_\_\_\_\_

Requested start month: \_\_\_\_\_

Envelope #: \_\_\_\_\_

Name of Bank: \_\_\_\_\_

Account #: \_\_\_\_\_

Transit #: \_\_\_\_\_

Branch: \_\_\_\_\_

Please enclose **VOID** cheque. Or:

Credit Card: VISA  MC

Card#: \_\_\_\_\_

Expiry Date: \_\_\_\_\_

Card Holder's Name: (as it appears on the card)  
\_\_\_\_\_

(PLEASE PRINT)

Signature of Card Holder:  
X \_\_\_\_\_

Date: \_\_\_\_\_

Contact the church office for further information concerning the **Dedicated Giving Plan.**

Tuesday to Friday: 9:00am-4:00pm

## OUR LADY *of the* Assumption Church

**Our Lady of the Assumption Parish**  
3141 Shaughnessy Street, Port Coquitlam, BC  
V3B 4L2

Phone: (604) 942-7808

Fax: (604) 942-7400

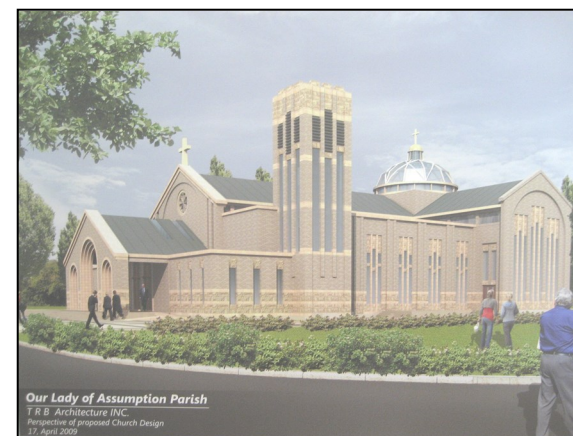
Web: [www.assumptionofmary.ca](http://www.assumptionofmary.ca)

Email: [assumptionofmary@shaw.ca](mailto:assumptionofmary@shaw.ca)

(This authorization is subject to change or cancellation by the contributor at any time. Use and disclosure of personal information collected from this form is in compliance with privacy legislation. Please note that as the convenience of credit card use comes at a cost to the contributor/card user in the form of interest charges, contributors should give careful consideration to the total cost of using credit cards to make their contribution. Contributors are encouraged to contribute only in a manner that does not create any such additional costs to their family budget.)

## Our Lady of the Assumption Parish

# Dedicated Giving Plan



## New Church Building Fund

“Dedicated giving enables the parish to receive dependable contributions throughout the year.”

## HELP WORSHIP GOD WITH YOUR OFFERING

To make Sunday giving as easy and effective as possible, our parish is now providing a new option for the weekly collection: Dedicated Giving through electronic payments.

This new option helps make giving easier for you by allowing you to plan ahead without having to write a cheque each week.

It also makes management easier for the parish, as we can meet our regular obligations that depend on consistent monthly financial contributions and engage in better future planning.

It helps all of us by reducing paperwork and bookkeeping costs.

You're probably already accustomed to monthly electronic bank transactions for insurance, mortgages, utility bills and other payments.

Dedicated Giving allows you to contribute monthly to the parish directly from your bank account or credit card. **Offertory envelopes are still required to acknowledge your presence at Sunday Mass.**

Offerings for special collections will still be made using designated envelopes and will remain separate from the Dedicated Giving Plan.

## TO PARTICIPATE IN THE DEDICATED GIVING PLAN, FOLLOW THESE SIMPLE STEPS

1. Determine the amount of your monthly offering. If you already give a certain amount weekly, remember to convert to a monthly amount. To do this, multiply your weekly amount by 52 and then divide by 12. Or you can refer to the Monthly Giving Calculator, adjacent.
2. Complete the Dedicated Giving Form (on the back) and attach a VOIDED cheque from your bank account or, if you prefer, provide credit card information.
3. Place the completed form in the collection basket or drop it off at the parish office.
4. Withdrawals from your bank account or credit card charges will be on or about the **15<sup>th</sup>** day of each month. Our parish bank account will be credited the same day.

### ADVANTAGES TO YOU

- Regular and consistent support to the parish
- Continued support if you are away
- Eliminates "catch-up" periods
- Convenience of not having to write weekly cheques
- Earn Airmiles/Aeroplan points

### ADVANTAGES TO THE PARISH

- Allows regular, dependable flow of contributions
- Enables effective planning of our parish resources
- Reduces paperwork and bookkeeping

### MONTHLY GIVING CALCULATOR

Weekly Amount	Monthly Amount
\$100	\$430
\$ 90	\$390
\$ 80	\$346
\$ 70	\$304
\$ 60	\$260
\$ 50	\$217
\$ 40	\$173
\$ 30	\$130
\$ 20	\$ 87
\$ 15	\$ 65

**Due to incurred bank fees, the minimum weekly donation amount is \$15.00**

*"As each one has received a gift, use it to serve one another as good stewards of God's varied grace"*